

CAM View

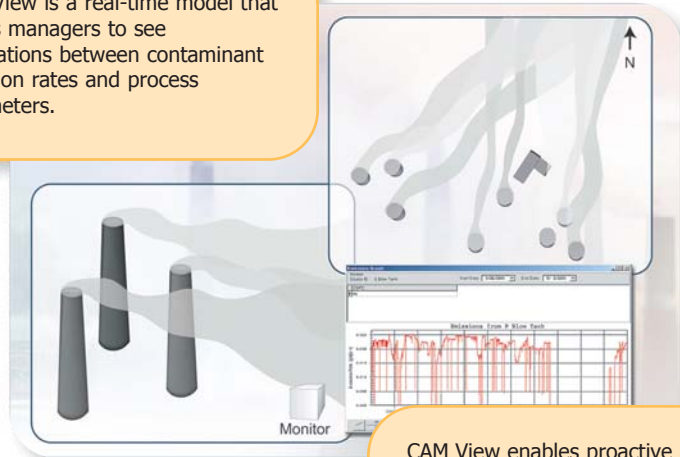
Compliance Assurance Monitoring Model

- ▶ Emissions impact simulation.
- ▶ Use of forecast weather data allows preventive maintenance on air pollution control equipment.
- ▶ Supervision over an unlimited number of sources and chemicals.
- ▶ Logging and reporting of all emission sources.
- ▶ Stored information can be displayed within a mapping framework, x-y plots and predefined reports.
- ▶ Operates on your existing IT infrastructures.
- ▶ Unified source code operates under all major Windows versions (Windows 98/Me/NT4/2000/XP).
- ▶ Supports the most common SQL databases interchangeably - ORACLE, MS-SQL, INTERBASE, MYSQL, and others.
- ▶ Comes with high-performance SQL server, free of charge.
- ▶ Reduces or eliminates the need for expensive CEMS.
- ▶ Completely integratable with our solid waste and effluent management software packages.

Users

- ▶ Nuclear Industry
- ▶ Pulp & Paper
- ▶ Odor Control
- ▶ Cement Plant
- ▶ Hazardous Waste Combustion
- ▶ Refineries

CAM View is a real-time model that allows managers to see correlations between contaminant emission rates and process parameters.



CAM View enables proactive air quality management - actions are taken before release occurs in order to avoid exceeding regulatory limits.

Why CAM View?

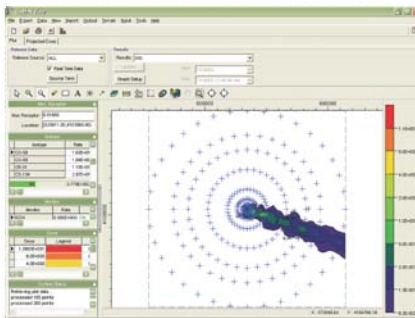
Most facilities have a monitoring/guard station that costs roughly U\$80,000/yr to operate. This station usually misses the emissions that pass it and once it actually registers a hit, it is unknown from which source the pollutants originated. CAM View saves on guard/monitoring station operating costs and provides precise results about emissions from your facility!

Which Source Impacted the Monitor Station?

Who is Responsible?

Avoid these questions with CAM View.

CAM View enables you to accurately determine attribution and accountability without hesitation.



Interactive interface provides real-time and forecast pollutant impacts with complete 2D & 3D visualization.

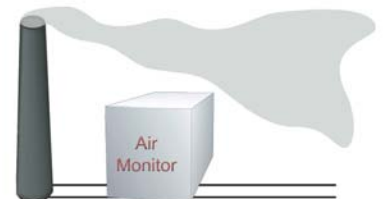
CAM View meets and surpasses compliance certification requirements of the Part 70 Operating Permits Program and Title VII of the 1990 Clean Air Act Amendments.

Maintenance

Are you scheduling major maintenance on days when the wind blows the plume into the city, upsetting the residents?

- ▶ Schedule maintenance according to forecast data.
- ▶ Know where your emissions will impact and schedule production accordingly.

Plan Your Operations to Suit Your Environmental Needs!

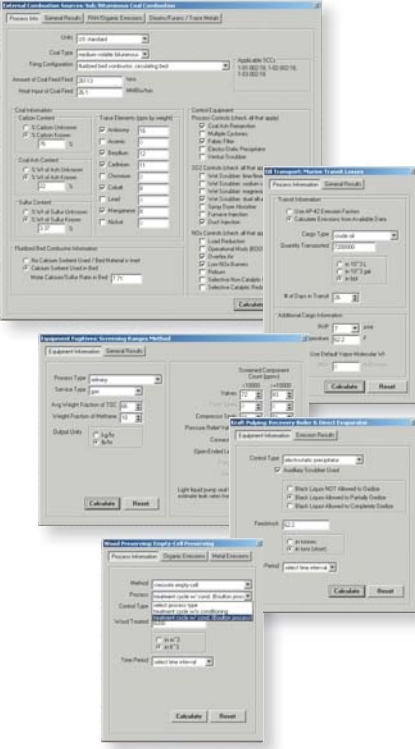


CAM View

Atmospheric Real Time and Forecast Modeling

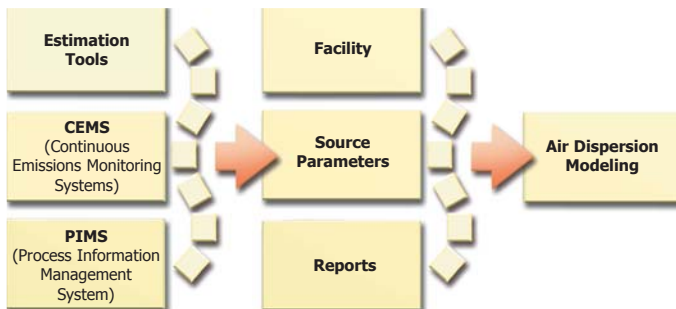
Dynamic Emissions Calculations

Customization will improve your emissions predictions, dynamically, as your process load changes.



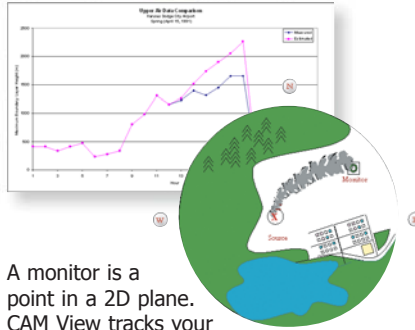
Reporting

CAM View automatically generates reports using the data in your real-time database. *Lakes* can customize your reports to meet the standards of your governing body and of your organization internal guidelines.



Upper Air Estimation

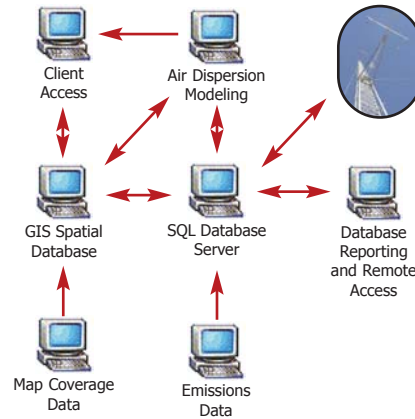
Reliable integrated upper air estimator enables real-time modeling.



A monitor is a point in a 2D plane. CAM View tracks your emissions in a 3D space for 360 degrees.

Flexible Architecture

CAM View's flexible architecture provides compatibility with virtually any system.



- ▶ Supports state-of-the-art multi-source models such as AERMOD, CALPUFF, and AUSTAL2000.
- ▶ Uses advanced building downwash algorithms for more realistic concentration estimates.
- ▶ Computes air concentration and deposition fluxes for an unlimited number of sources and chemicals.
- ▶ Displays results on a mapping system with contouring, color-coding, text posting and 3D views of your entire facility.
- ▶ Uses the unit emission and summation concepts to dramatically reduce the processing time for large amounts of chemical components per source.
- ▶ Imports meteorological data acquired from on-site stations, online weather stations or meteorological model results.
- ▶ Estimates upper air parameters, such as the mixing height, using planetary boundary layer theory.
- ▶ Estimates real-time emissions using your operational parameters, such as flow, temperature, loading fuel feed, among others.
- ▶ Incorporates data from your continuous emission monitoring system.
- ▶ Integrated with extensive emissions factors library.
- ▶ Logs an unlimited number of sources and chemicals.

- ▶ Tracks point, volume, area, and line source emissions.
- ▶ Supports fugitive emissions calculations.
- ▶ Produces predefined reports that can be exported to Word, Excel, HTML, etc.