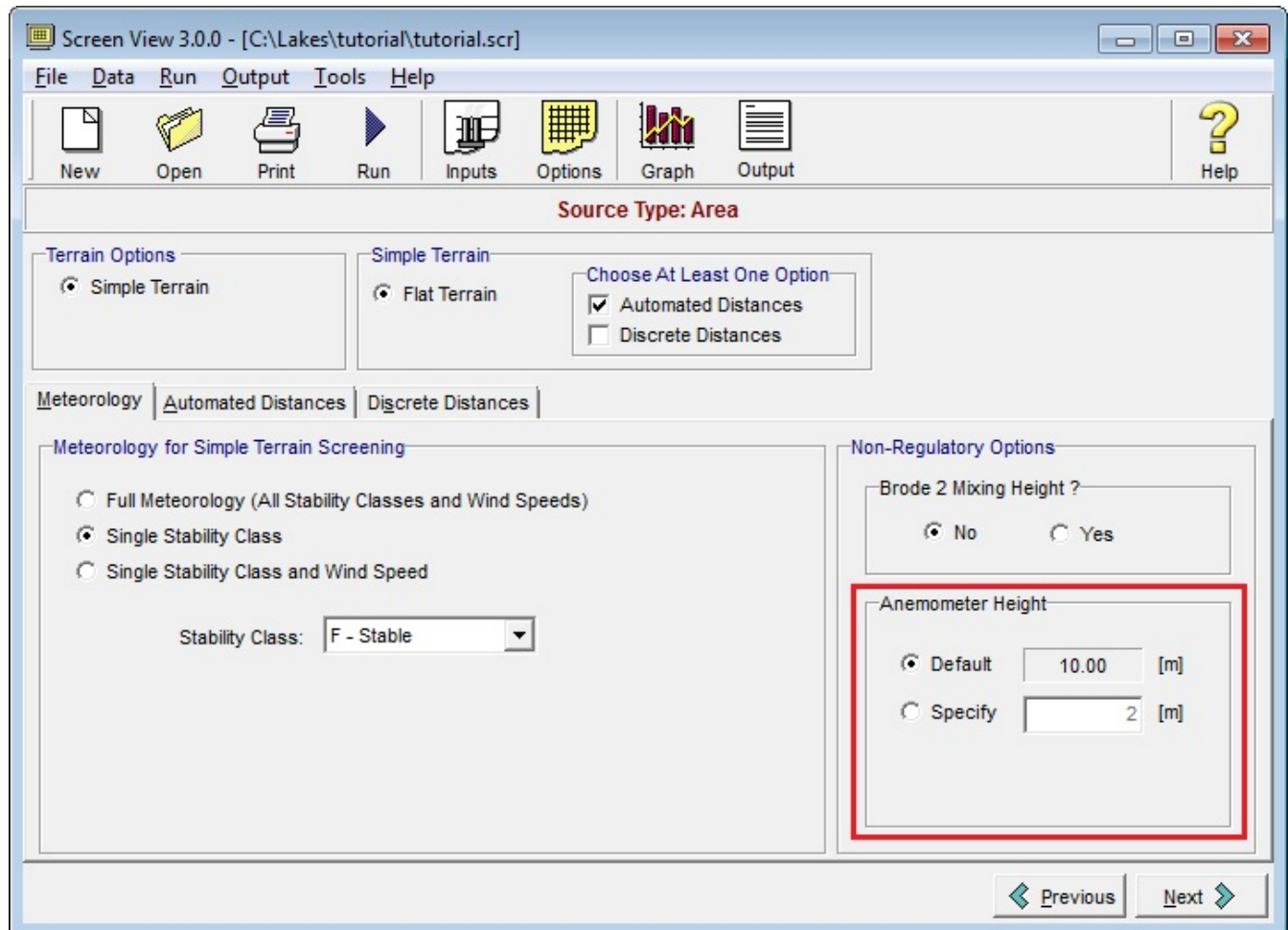


Meteorology

What is the anemometer height?

The anemometer height is the height above the ground at which the wind speed is measured. The default value for the anemometer height is 10 meters. The anemometer height is of particular importance for calculating the building downwash in Screen View. In order to calculate building downwash the measured the wind speed must be adjusted to the stack height wind speed, and this requires knowing the height of the original measurement, the anemometer height.



Note: Changing the anemometer height from the default value of 10m is a non-regulatory option.

Unique solution ID: #11024

Author: Gareth Davis

Last update: 2010-06-02 17:40