

AUSTAL VIEW

LAGRANGIAN PARTICLE TRACKING AIR DISPERSION MODEL

Sources (unlimited)

- Point
- Volume
- Area
- Line
- Cooling Tower

Receptors (unlimited)

- Single or Multi-Tier Grid
- Calculated by the model

Met Data

- Hourly met file
- Statistical met file

Terrain Data

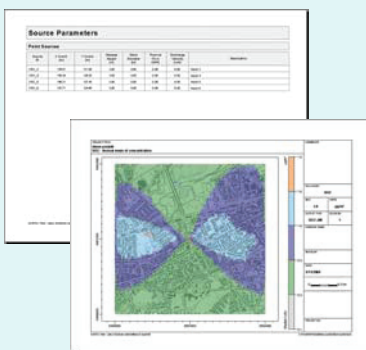
- XYZ File
- ArcInfo GRIDASCII

Maps

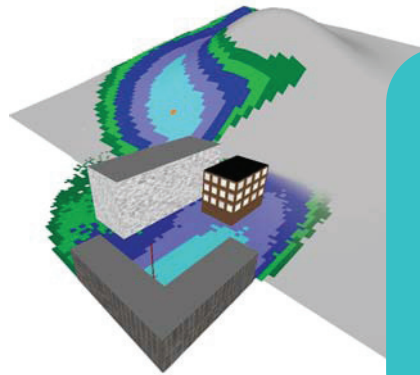
- Bitmap
- USGS DLG
- USGS LULC
- AutoCAD DXF
- ESRI Shapefile
- JPEG
- TIFF/GeoTIFF
- MrSID

Export Options

- Shapefiles
- Bitmaps
- Metafiles



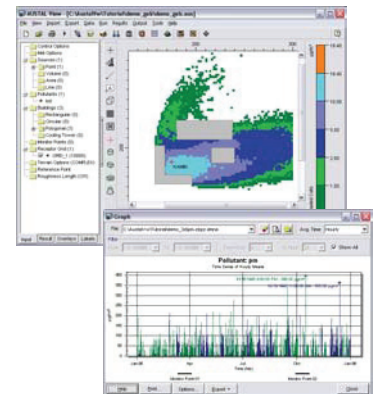
We thank ArguSoft, from Germany, for the support provided on the development of AUSTAL View.



AUSTAL View is an ergonomic and intuitive user interface for the official German Federal Environmental Agency air dispersion model, AUSTAL2000. AUSTAL View uses a Lagrangian particle tracking air dispersion model that contains its own diagnostic wind field model. The model takes into account the influence of topography on the wind field and therefore on the dispersion of pollutants.

Features

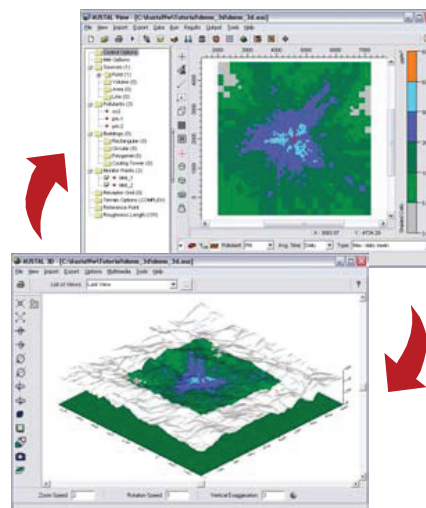
- Interactive graphical input
- GIS-enabled interface
- Extensive map support
- Multiple sources and pollutants
- Emission time series generator
- Hourly or statistical met data
- Import AUSTAL2000 input files
- Add-on module available for odor evaluation



Output Options

- Display of calculation results as contours, shaded cells, and posting
- Graph of concentration time series at monitor points
- Powerful 3D visualization of input and output data
- Terrain and wind field visualization in 2D and 3D
- Graphical annotation tools and labeling options
- Complete control over customization of graphical output displays
- Report-ready output: source parameters, emissions, and results

SEAMLESS 2D TO 3D



Meteorological Tools

- Windrose plots
- Frequency tables
- Wind class frequency graphs
- Dispersion class frequency graphs



ALSO AVAILABLE IN GERMAN