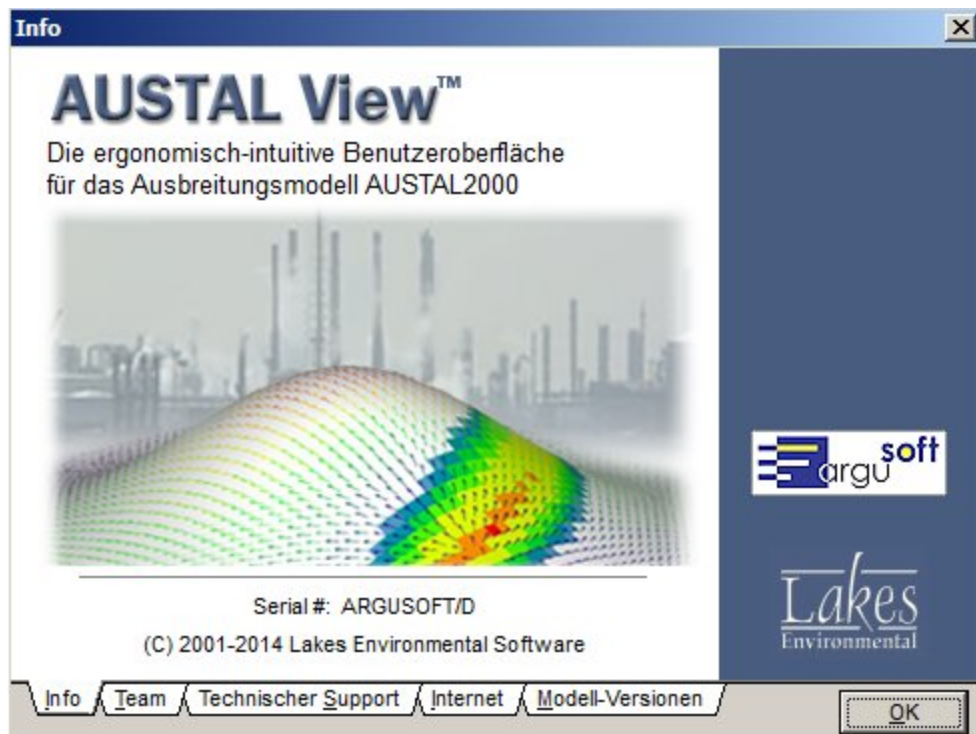


AUSTAL View™

The Ergonomical-Intuitive User Interface for the Dispersion Model AUSTAL2000

Release Notes

AUSTAL View – Version 9.6



Lakes Environmental Software

support@webLakes.com | www.webLakes.com

ArguSoft

support@argusoft.de | www.argusoft.de



AUSTAL View™ Version 9.6

Release Notes

Dec. 5th, 2019

New Functions

Thema	Beschreibung
Map-Import	Import from WMS-services It is now also possible to import maps from encrypted WMS services (https: // ...).
Image-Import	JP2-Bilder A module has been implemented that enables the import of large JP2 (aerial) images.

Resolved Issues

Thema	Beschreibung
TAL-Anemo	Selection of the anemometer position The selection of the adapted anemometer position with TAL-Anemo has been revised so that the correct position is obtained.
Parameter	An error was fixed for calling austal2000.exe with the parameter -p.