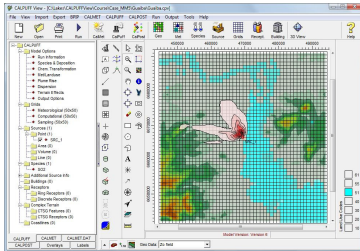


Latest Features

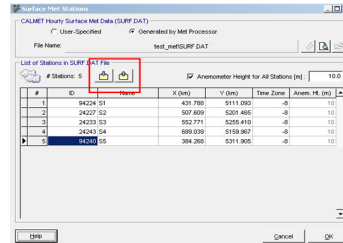
CALPUFF View™

Complete Interface for the CALPUFF Air Dispersion Modeling System: CALPUFF, CALMET, and CALPOST



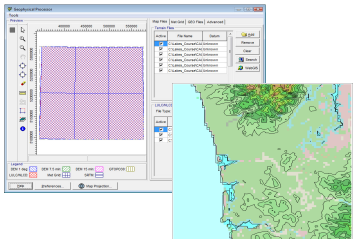
Complete Graphical Modeling System

Fully integrated interface combining easy to use graphical tools, seamless geophysical and met pre-processing, model runs, and automated contouring of results.



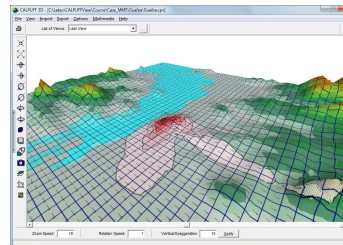
Import From Excel

Quickly and easily import and export sources, buildings, receptors, emissions, and much more from Excel files!



Automatic Terrain and LULC Data Download

CALPUFF View simplifies your geophysical data processing by automating the download of terrain data and land use data for any location worldwide.



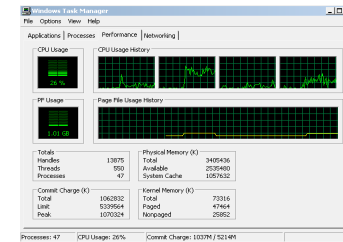
Powerful 3D View

Complete 3D visualization of your entire modeling area. Sources, buildings, and contour results are displayed in context with the surrounding terrain.



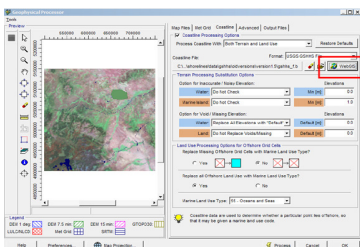
Puff Tracking

Using the export to Google Earth feature, you can quickly and easily see where your puff will impact. The play feature shows how your puff disperses over time.



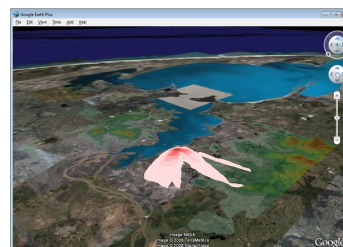
Parallel CALMET

Increase your processing capability! CALPUFF View now has the option to utilize multiple cores when running the CALMET model.



Automatic Download of Coastline Data

Automatically download coastline data from www.webGIS.com! Coastline data is available for locations across the globe.



Export to Google Earth™

Easily export your CALPUFF project (buildings, sources, land use, contour results, etc.) into Google Earth for a complete view of your project and the impacts on nearby surroundings.

**Visit www.webLakes.com today
for more information on CALPUFF View!**