

EMISSIONS VIEW

CUSTOMIZABLE GIS-BASED EMISSIONS INVENTORY SYSTEM

Emissions Estimation

For sources where no measurements are available, emissions can be based on processes using any of the hundreds of emissions estimation calculators for all processes contained in the U.S. EPA AP-42 and the Emissions Inventory Improvement Program (EIIP). These include processes in the Petroleum Industry, Wood & Paper Industry, Metallurgical Industry, Chemical Processing and others.

All of the estimation tools are integrated with the primary GIS interface to facilitate easy updating of the central emissions inventory and subsequent comprehensive reporting.

Metadata

Complete support for GIS standard metadata is provided through an integrated utility that fully implements the Federal Geographic Data Committee's Content Standard for Digital Geospatial metadata.

Users

- In use across the entire USA
- Worldwide application

Package Options Available

- Facility level GIS package
- State-wide GIS package
- Emissions calculators only (no GIS)

Versions

- Web-based
- Client/Server
- Desktop



Emissions View is a dynamic and powerful package that features a unique spatial and temporal GISbased platform that enables users to create and maintain a comprehensive emissions inventory of a variety of sources including point, area, and mobile, nonroad, and onroad mobile.

Designed for facility to state-wide to nationwide coverage, this package incorporates all related emissions guidances and models into one central unified interface. Data and computations are compiled and stored in a complete geospatial database engine (SQL, Oracle, or Interbase). oad, and onroad mobile.

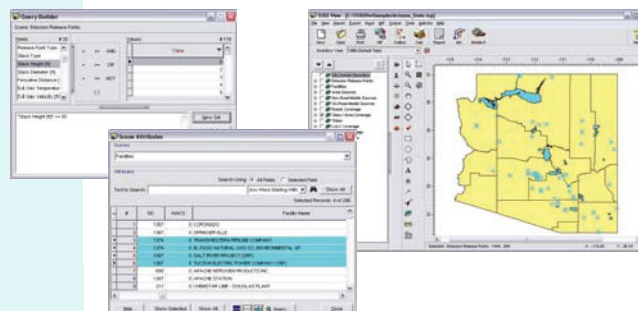
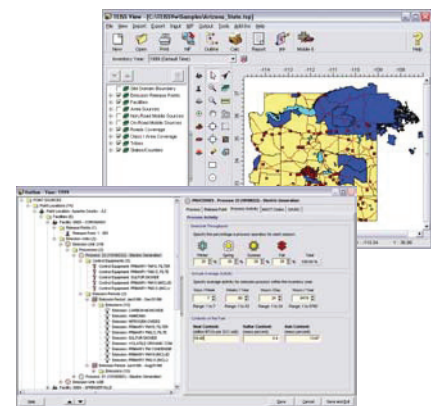
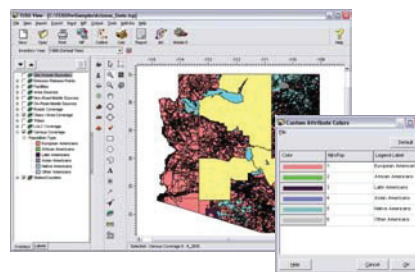
GIS Features

Completely integrated GIS no need to purchase additional software. 100% ESRI compatible.

- Query tools
- Identify tools
- Select features by attribute
- Color by attribute

Optional Permit and Compliance Modules

- Integrates state-wide permit, costing, and compliance into Emissions View
- Direct regulatory reporting to states and the U.S. EPA in various formats
- Fee allocation and accounting
- Correspondence and compliance management



U.S. EPA Emission Models

Emissions View reads output results from various U.S. EPA models such as:

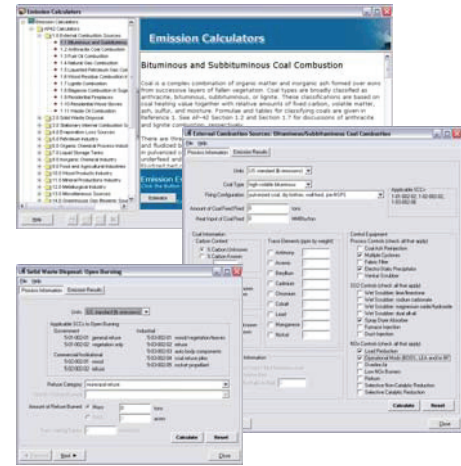
- LandGEM
- MOBILE6
- NMIM
- NONROAD
- TANKS
- WATER9

Emissions Calculators

Comprehensive emissions estimation calculator toolset based on industry standard approaches including AP-42, EIIP, and NEI. Over 300 validated emissions calculators produce the emissions data you are seeking. A brief overview of calculator categories include:

- External Combustion Sources
- Solid Waste Disposal
- Stationary Internal Combustion Sources
- Evaporation Loss Sources
- Petroleum Industry
- Organic Chemical Process Industry
- Liquid Storage Tanks
- Inorganic Chemical Industry
- Food and Agricultural Industries
- Wood Products Industry
- Mineral Productions Industry
- Metallurgical Industry
- Miscellaneous Sources
- Greenhouse Gas Biogenic Sources
- Gas Field Production
- Area Sources Charbroiling
- Area Sources Solvent Use
- Area Sources Structural Fires
- Agricultural Tilling
- Fertilizer Application
- Mining and Quarrying PM
- Aircraft Emissions
- Railroad Emissions

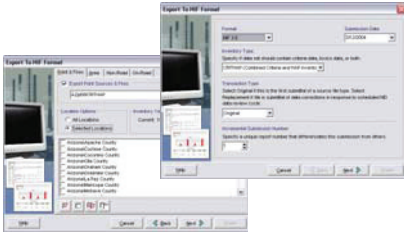
Emissions View contains calculators for AP-42, EIIP and NEI all accessible through a central menu with extensive online help.



Flexibility is extended with an intuitive interface to create and implement userdefined emission calculators at any time.

NIF Import/Export Options

Easy to use wizards are available for importing and exporting emissions data in NIF formats. A series of validation checks are performed to guarantee completeness of the data.



Inventory Preparation Plan (IPP)

Emissions View offers a series of wizards that guide inexperienced emissions inventory managers through essential steps on creating an IPP, while advanced users are free to edit and create data via additional options.



Fire Tracking System

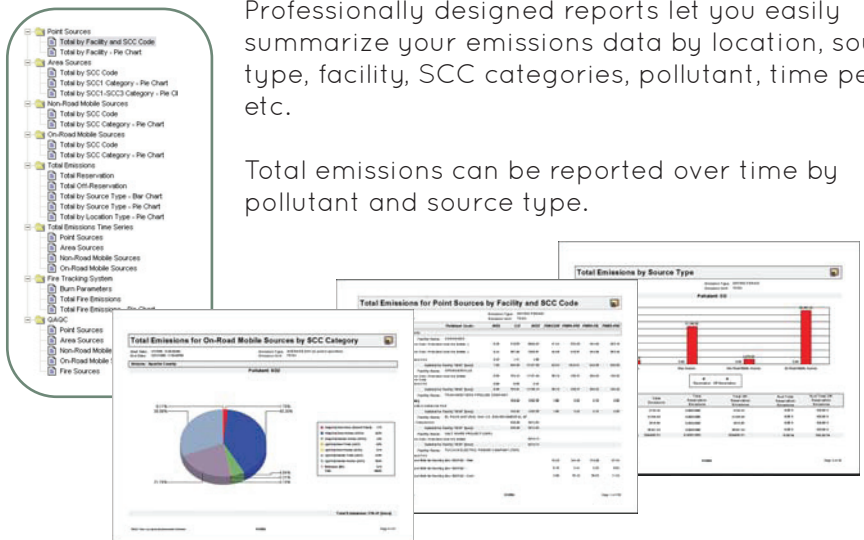
A fire tracking system as per WRAP FTS policy is available.

- Fire activity data
- Fire emissions estimation tools
- Annual fire emissions reports

Emissions Reports

Professionally designed reports let you easily summarize your emissions data by location, source type, facility, SCC categories, pollutant, time period, etc.

Total emissions can be reported over time by pollutant and source type.



info@weblakes.com

www.weblakes.com