

# MOBILE View

**Complete & Powerful User Interface for MOBILE6**

## Model Applications

MOBILE View is designed for all levels of modelers and is suitable for developing:

- ▶ Mobile source control strategies and emission inventories
- ▶ Metropolitan and transportation planning
- ▶ Academic and investigative research
- ▶ Environmental impact assessments

## Model Features

- ▶ Support for all standard MOBILE6 commands, plus advanced support for air toxics and particulates are available
- ▶ Automatic input file generation that conforms to U.S. EPA MOBILE6 format
- ▶ Ability to import pre-existing MOBILE6 input files
- ▶ Ability to create and customize MOBILE6 external files for use in MOBILE View, including the ability to import existing files, and cut/paste from Excel
- ▶ Graphical and text reports of your model results
- ▶ Database and spreadsheet friendly output formats are supported
- ▶ Help and explanations available for both the MOBILE View user-interface and all MOBILE6 commands



MOBILE View is an ergonomical and intuitive user-interface for the U.S. EPA MOBILE6 mobile source emission factor model. MOBILE View provides an easy way to create all the files you need for the analysis, and can model any number of runs and scenarios quickly and efficiently.

MOBILE View can save time and energy in setting up your various MOBILE6 Runs and Scenarios, taking the guesswork out of where to place key commands. Run Wizards guide you through all the steps necessary to create a project's run, while Scenario Wizards allow you to further individualize scenarios to more closely reflect specific conditions.

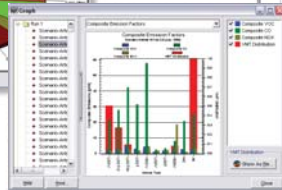
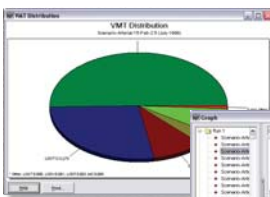
### Project Wizard



### Scenario Wizard



### Run Wizard



## Pollutants

MOBILE View supports the following pollutants:

- ▶ Hydrocarbons (CH)
- ▶ Carbon Monoxide (CO)
- ▶ Nitrogen Oxides (NOx)
- ▶ Carbon Dioxide (CO2)
- ▶ Particulates
- ▶ Air Toxics

## Emission Estimation

MOBILE View estimates emission rates from roadway sources under various conditions that can affect emission levels.

The MOBILE6.1/6.2 extensions can also estimate emissions of:

- ▶ Exhaust particulates,
- ▶ Tire and brake wear, and
- ▶ Various hazardous air pollutants.

