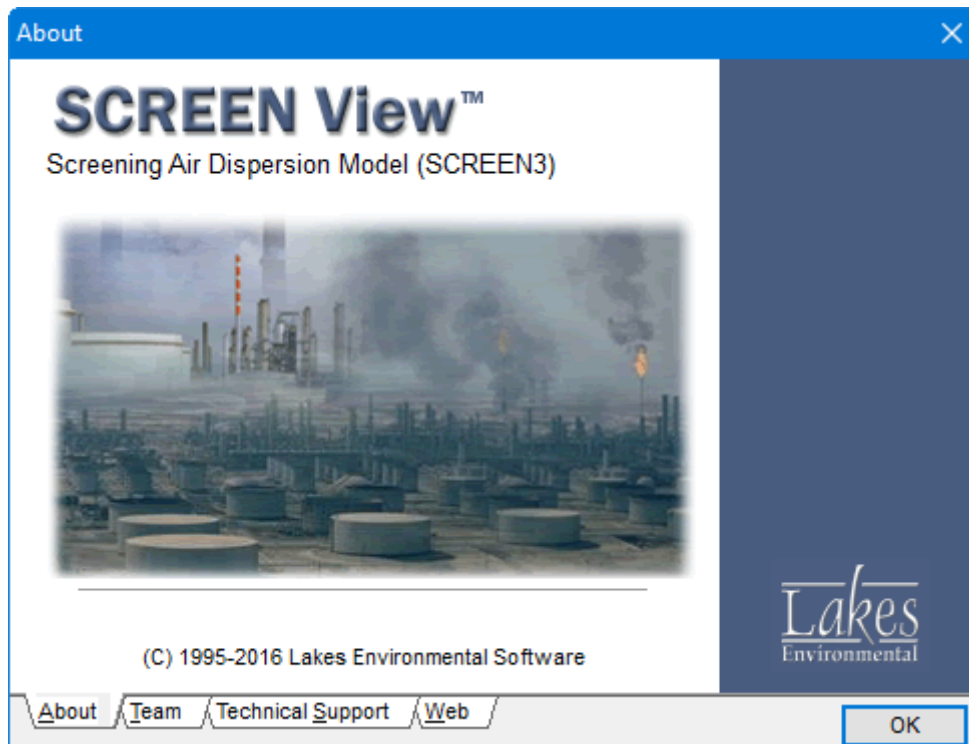


SCREEN View™

Interface for the US EPA Screening Air Dispersion Model - SCREEN3

Release Notes



Lakes Environmental Software
Tel: (519) 746-5995 – Fax: (519) 746-0793
E-mail: support@webLakes.com
Web Site: www.webLakes.com



© 1996-2016 Lakes Environmental Software

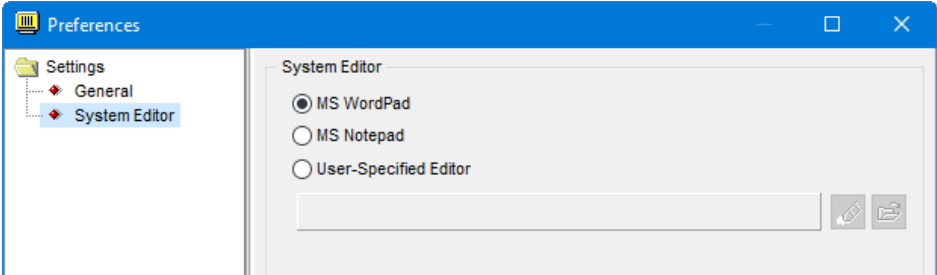
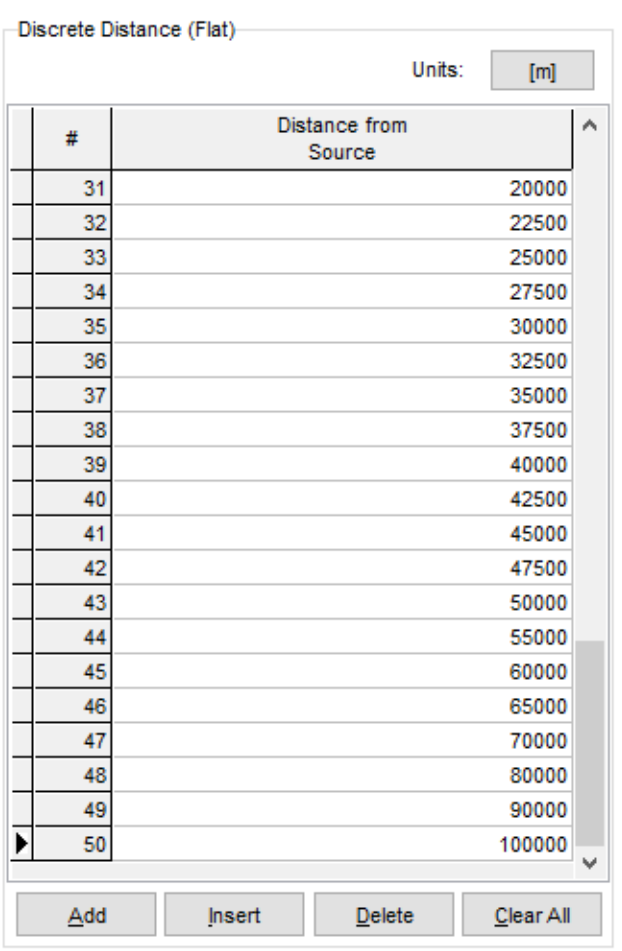
SCREEN View™ Version 4.0.0

Release Notes

November 4, 2016

New Features

Topic	Feature Description
Installation	<p>Compatibility with Windows 10, 32-Bit and 64-Bit</p> <p>SCREEN View Version 4.0.0 is compatible with both 32-bit and 64-bit versions of the Windows 10 operating system.</p> <p>The Tutorial and Example Projects are installed by default under C:\Lakes\Screen View. During installation, you will be able to change this default location. Please note that the tutorial files must be installed in a folder where the user has Full Rights.</p>
Installation	<p>Updated End Users License Agreement</p> <p>Lakes Environmental's freeware license agreement has been updated. The updated agreement is available in the Help file.</p>
Model	<p>Latest Release of US EPA Model Available</p> <p>The US EPA SCREEN3 model version 13043 is now included in SCREEN View. This update produces identical numeric results to the previous model (version 96043) but was recompiled to resolve compatibility issues with modern 64-bit operating systems and minor formatting issues.</p> <p>A full list of model changes is available on the US EPA website (https://www3.epa.gov/ttn/scram/mcbs/scrz3.txt).</p>

Topic	Feature Description																																										
<p>Preferences</p>	<p>Select Default Text Editor</p> <p>Users can now specify the default text editor for opening project input and output files under the File Preferences options.</p> 																																										
<p>Discrete Receptors</p>	<p>Support for 50 Distances</p> <p>The interface was updated to accept up to 50 discrete distances.</p>  <table border="1" data-bbox="472 957 1068 1724"> <thead> <tr> <th>#</th> <th>Distance from Source</th> </tr> </thead> <tbody> <tr><td>31</td><td>20000</td></tr> <tr><td>32</td><td>22500</td></tr> <tr><td>33</td><td>25000</td></tr> <tr><td>34</td><td>27500</td></tr> <tr><td>35</td><td>30000</td></tr> <tr><td>36</td><td>32500</td></tr> <tr><td>37</td><td>35000</td></tr> <tr><td>38</td><td>37500</td></tr> <tr><td>39</td><td>40000</td></tr> <tr><td>40</td><td>42500</td></tr> <tr><td>41</td><td>45000</td></tr> <tr><td>42</td><td>47500</td></tr> <tr><td>43</td><td>50000</td></tr> <tr><td>44</td><td>55000</td></tr> <tr><td>45</td><td>60000</td></tr> <tr><td>46</td><td>65000</td></tr> <tr><td>47</td><td>70000</td></tr> <tr><td>48</td><td>80000</td></tr> <tr><td>49</td><td>90000</td></tr> <tr><td>50</td><td>100000</td></tr> </tbody> </table>	#	Distance from Source	31	20000	32	22500	33	25000	34	27500	35	30000	36	32500	37	35000	38	37500	39	40000	40	42500	41	45000	42	47500	43	50000	44	55000	45	60000	46	65000	47	70000	48	80000	49	90000	50	100000
#	Distance from Source																																										
31	20000																																										
32	22500																																										
33	25000																																										
34	27500																																										
35	30000																																										
36	32500																																										
37	35000																																										
38	37500																																										
39	40000																																										
40	42500																																										
41	45000																																										
42	47500																																										
43	50000																																										
44	55000																																										
45	60000																																										
46	65000																																										
47	70000																																										
48	80000																																										
49	90000																																										
50	100000																																										