

WRPLOT View™

Version 8.0

Installation & License Activation Instructions

WRPLOT View is a Microsoft® Windows®-based program that can be installed in the following Windows operating systems (32-bit or 64-bit):

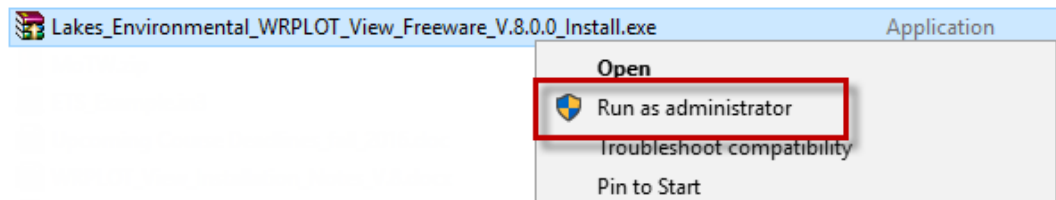
- Microsoft Windows 10
- Microsoft Windows 8 & 8.1
- Microsoft Windows 7 (Home Premium, Professional and Ultimate versions)

1. WRPLOT View Installation Instructions

Please note that you **must have administrative rights** to your computer to install the software.

Step 1: Download and save the self-extracting installation file (Lakes_Environmental_WRPLOT_View_Freeware_V.8.0.0_Install.exe) to a temporary folder in your computer.

Step 2: Right-click on the installation executable file and select **Run as administrator** from the context menu.



Step 3: Follow the installation instructions.

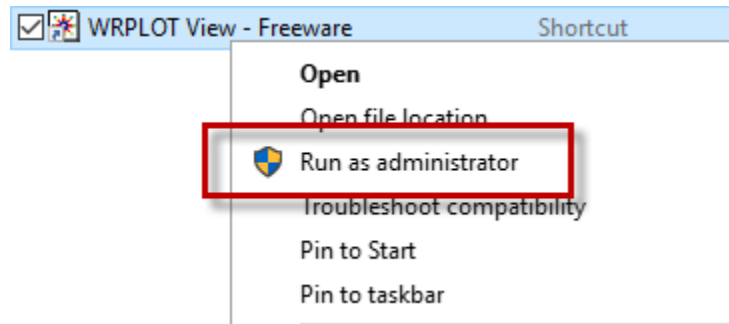
Step 4: After the WRPLOT View installation is completed, go to **Section 2** for instructions on obtain an activation code and register the software.

2. Registration and Activation Instructions

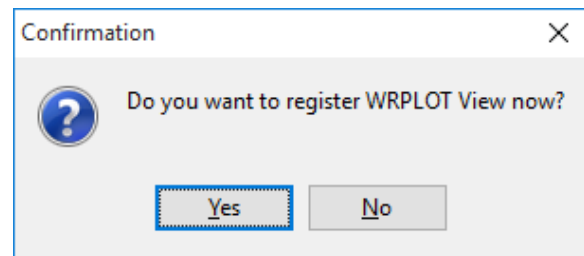
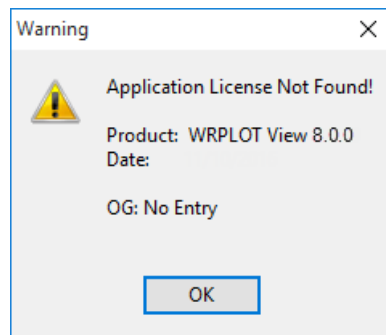
After installing, WRPLOT View must be activated using an activation code sent to the user after registering the product.

Please note that you **must have administrative rights** to your computer to properly activate the software.

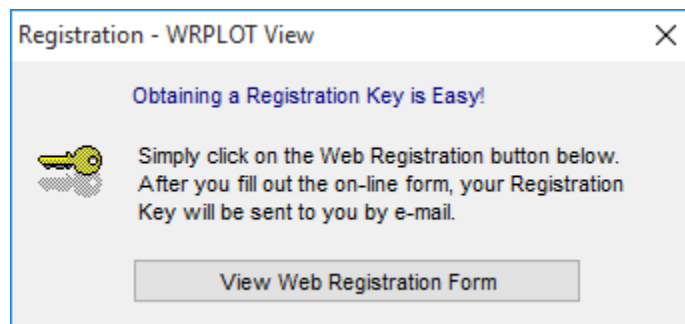
- Step 1:** Open WRPLOT View by right-clicking the program shortcut and selecting **“Run as administrator”** from the context menu.



- Step 2:** A warning will appear saying the license was not found. Click **OK**. Click **Yes** when asked if you want to register the application.



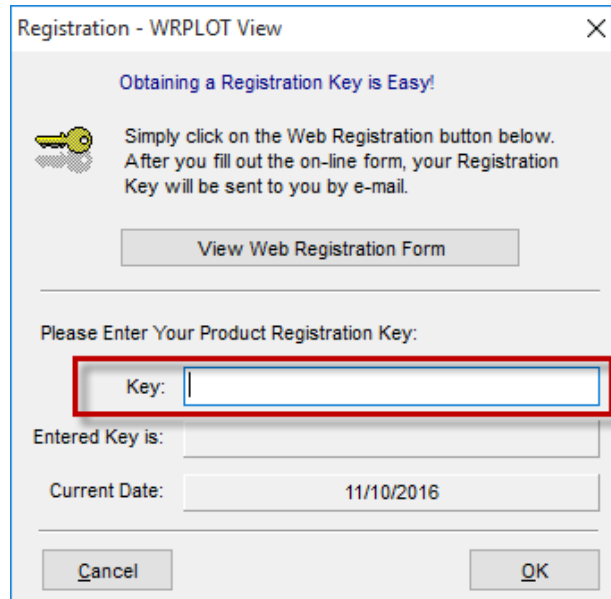
- Step 3:** Select the **View Web Registration Form** button to be taken to the WRPLOT View Registration webpage in your internet browser.



Step 4: Supply the requested contact information. The activation code will be sent automatically to the email address you provide.

Note: If you do not receive the activation code email within 30 minutes of registering, please check your Spam or Junk Mail folder as the message may have been filtered. You can add **support@webLakes.com** to your list of approved senders to avoid this filtering.

Step 5: Once you have received your activation code, input the value to the **Key** field in the **Registration** window.



Registration - WRPLOT View

Obtaining a Registration Key is Easy!

Simply click on the Web Registration button below. After you fill out the on-line form, your Registration Key will be sent to you by e-mail.

View Web Registration Form

Please Enter Your Product Registration Key:

Key:

Entered Key is:

Current Date: 11/10/2016

Cancel OK

Step 6: Begin using WRPLOT View!

Note: Activation codes for Lakes Environmental freeware products are valid for one year from the date requested. After one year, you will need to register for a new activation code.

3. Having Installation Problems?

If you have any installation or activation problems, please contact our support team at support@webLakes.com.